

# State Mixed Pairs Championships 2025

## Country Mixed Pairs Championships 2025

### Supplementary Regulations

**Important Note:** This event awards red masterpoints with a weighting of  $W=3.75$ . It is imperative that the director of the sessions (including club qualifying events) sets the weighting correctly when scoring the event. The procedure for doing this in Compscore2, Compscore3, Scorebridge and ASE9 can be found in the appendix at the end of these regulations (Parts A, B, C and D, respectively).

1. The Championship is conducted under the Laws of Duplicate Bridge 2017 and the Tournament Regulations of the Bridge NSW.
2. Club qualifying events (CQE) must be held over a maximum of four sessions. Clubs may hold more than one qualifying event, but the maximum number of sessions allowed for any single club is five.
3. Yellow Systems are not permitted at any stage of the Championship.
4. Directors must be qualified at Club level (D) or above.
5. Players must have an active Australian Bridge Federation masterpoint number.
6. Players do not have to be members of the club holding the qualifying competition, but the Masterpoint Scheme requires all competitors in online sessions to be members of a Bridge NSW club.
7. Sessions may be held face-to-face or online using the RealBridge platform. Qualifying sessions held on BBO or Stepbridge are not allowed.
8. Timetable. Clubs and their representatives should carefully note the following dates and times:

Club qualifying competitions must be completed and results and pair nominations submitted (see 18 below) by no later than Monday 12 May 2025.

Session times for the Championship Finals are:

Saturday 17 May 2025      10:30 am and 2.30 pm

Sunday 18 May 2025      10.00 am and 2.00 pm

Those players who do not qualify to either the State or Country Mixed Pairs Final on Sunday will be granted free entry to the Bridge NSW Autumn Swiss Pairs Congress.

9. The upper limit to the number of pairs that may be sent by any given club is that club's entire qualifying field. Clubs will be charged \$120 per representative pair for pairs from Country clubs and \$160 per representative pair for pairs from Metropolitan clubs. Lunch is provided by Bridge NSW on both days and is included in the entry fee.
10. Pairs that have not qualified via a CQE will be accepted into the Final at a cost of

\$200 per pair.

11. To get the benefits of the discounted entry fee above, all pairs must be bona fide club representatives, i.e. each pair must have entered and played a club qualifying event as a pair – it is not allowable for players who have qualified in different partnerships to play together in the Final as club representatives. Such players may, of course, enter the Final directly as allowed under Reg 10.
12. Non-mixed pairs may play in club qualifying sessions and are entitled to any red masterpoints won. However, the event must be advertised within the club as a Mixed Pairs event, and a majority of pairs in the field must be mixed. Non-mixed pairs cannot progress to the State Final.
13. Pairs playing in the State Final are allowed a substitution of one player for one session on the Saturday, and no substitution on the Sunday. All substitutions must otherwise be in accordance with the Bridge NSW Substitution Regulations and submitted via the on-line substitution form at <https://bridgensw.com.au/substitution/> and must be approved in advance by the Bridge NSW Events Committee.
14. The top 14 pairs on Saturday will qualify for the State Mixed Pairs Final. In addition, the top 14 pairs from the non-metropolitan clubs will qualify for a separate Country Mixed Pairs Final. Country pairs who qualify for the State Final may choose which Final they contend.

If any of the 14 pairs that qualify for either final does not take up their place, for any reason, the vacant place will move to the next ranked pair in that pair's section of the draw, until all places are filled.

15. If after the choice made by pairs that would qualify for both finals there are not 14 pairs for the Country Mixed Pairs Final, but there are at least eight, then a Country Mixed Pairs Final will be played. If there are an odd number of Country Pairs between 8 and 14, the lowest placed pair will not gain a place in the final. If there are not eight pairs for the Country Mixed Pairs Final there will be no award of the Country Mixed Pairs Championship.
16. To be eligible to qualify for the Country Mixed Pairs Final a pair must either
  - a. have qualified via a non-metropolitan affiliated club, or
  - b. each member of the pair must have a main residence in a non-metropolitan region of NSW and/or be a bona fide member of and regular player at a non-metropolitan club. No pair that qualified via a metropolitan club is eligible for the Country Pairs Final.

17. State Mixed Pairs prize money is 1<sup>st</sup> \$500, 2<sup>nd</sup> \$250 & 3<sup>rd</sup> \$150 per pair.  
Country Mixed Pairs prize money is 1<sup>st</sup> \$400, 2<sup>nd</sup> \$200 & 3<sup>rd</sup> \$100 per pair.  
The Autumn Swiss Pairs Congress prize money is 1<sup>st</sup> \$250, 2<sup>nd</sup> \$150 & 3<sup>rd</sup> \$100 per pair.  
If there are less than 50 entries for the State Mixed Pairs over-all then the prize

money will reduce to 1<sup>st</sup> \$300, 2<sup>nd</sup> \$150 & 3<sup>rd</sup> \$100 per pair.

If the Country Mixed Pairs Final is less than a 14 pair event the prize money will reduce to 1<sup>st</sup> \$200, 2<sup>nd</sup> \$100 and 3<sup>rd</sup> \$50 per pair.

If there is no Country Mixed Pairs Final then no prize money will be awarded for that event.

If there are less than 20 entries for the Autumn Swiss Pairs (including direct entries and free entries) then the prize money will reduce to 1<sup>st</sup> \$150, 2<sup>nd</sup> \$90, 3<sup>rd</sup> \$70 per pair.

A special prize of \$100 will be awarded to the best placed restricted pair (where both players are restricted players as at 1 Jan 2025) in the Open Final. If no pair wins this prize it will be awarded to the best placed restricted pair in the Country Final. If still not won, it will go to the best placed restricted pair in the Autumn Swiss Pairs.

18. An Excel form is required to be submitted by clubs holding CQEs. The form is available for download from the Bridge NSW website <https://bridgensw.com.au/wp-content/uploads/2025/01/StateMixedPairsClubQualifyingEventWorkbook2025.xlsx> . This is to be completed and used as a cover sheet and check list and uploaded through the Bridge NSW website at <https://bridgensw.com.au/smp-cqe-submission/> by no later than **12 May 2025**. The following documents are to be submitted:

- The completed coversheet available from the Bridge NSW website (see above) as an Excel file. This will include the names and ABF numbers of the pairs representing the club;
- A complete copy of the results of each qualifying session as a pdf, html or txt file;
- The masterpoint file as a .red file. This is mandatory if you score using a computer.

Failure to provide the above documents and for the details on the .red file and the results to match the cover sheet by the due date will result in no red masterpoints being issued by Bridge NSW for the CQE and no entry being accepted to the final.

19. Clubs should note that red masterpoints for the qualifying sessions will be submitted to the Masterpoint Centre after the Championship Final.
20. Bridge NSW will issue each participating club with an invoice to cover the entry fees of representative pairs or the cost of masterpoints issued. Do not send any money until you receive the invoice.
21. Masterpoints.

Red masterpoints are awarded with a weighting of  $W = 3.75$  for any club qualifying competition.

- The red masterpoints awarded must **NOT** be submitted via the club's

monthly upload to the ABF Masterpoint Centre. They must be sent as a .red file in an email attachment to the Tournament Organiser. **Do not send anything to the ABF Masterpoint Centre or the State Masterpoint Secretary.**

- Red masterpoints are awarded on a sessional basis only; i.e. there is NO outright award.
- These sessions are run under Bridge NSW's grade B (State Championship) allowance – do not use your club's B4c sessions.
- Bridge NSW will charge for Masterpoints at \$2.54 per Red Masterpoint.

22. If Bridge NSW decides that the State Final should be held on RealBridge rather than face-to-face, the following changes will be made:

- a. The cost for all entrants will be reduced by \$20 per pair. Prizes will be reduced.
- b. Eligibility for the Country Pairs Final will be based solely on the player's place of residence. A minimum of 12 Country pairs must be available for a separate Country Pairs Final to be held.
- c. Start time for the Final will be brought forward to 10.00am.

23. All correspondence should be sent to the Tournament Organiser at [smp@bridgensw.com.au](mailto:smp@bridgensw.com.au).

*Note: Running a bona-fide Mixed Pairs Event*

The concession to allow non-mixed pairs to contest a club qualifying event is made to ensure that clubs with low numbers of players can still play a qualifying event. In general, the only cases where mixed and non-mixed pairs should play as one section are:

- a. The number of Mixed pairs or the number of Non-mixed pairs is less than or equal to four (i.e. the size of a separate field is too small for a three table Howell), or
- b. The number of Non-mixed pairs is equal to either 5 or 7 and the total number of pairs is an odd number (i.e. the non-mixed pairs would have to play a Howell with a five or four board sit-out)

Where these conditions are not met the club should run separate sections for Mixed and Non-mixed pairs. This is a guide only, we recognize that club circumstances may dictate other arrangements.

# Appendix: Masterpointing the State Open Pairs Club Qualifying Event Correctly

## Part A - Using Compscore2

1. Set up individual sessions as normal, but choose "Red" for Masterpoints and "5.00" for Basic Weighting (see Figure 1).

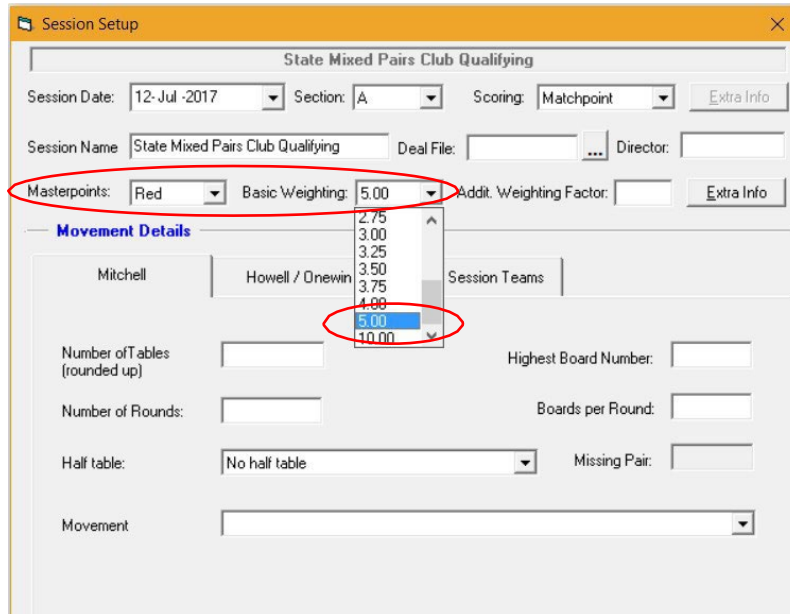


Figure 1: Session set-up in Compscore 2

2. In the Additional Weighting Factor box, type "0.75" to reflect the fact that this event is restricted by gender (Figure 2).

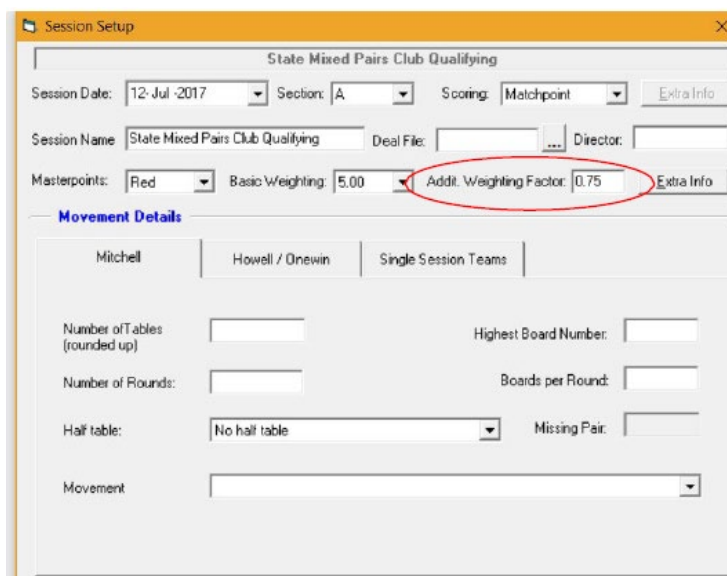
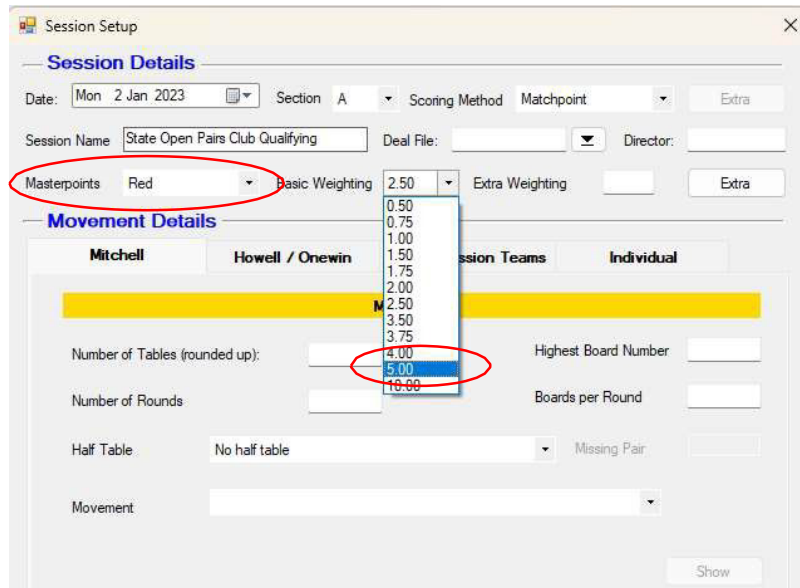


Figure 2: Additional Weighting Factor for a Mixed event

3. Type in the Movement Details and score normally. The masterpoints will be calculated correctly. Generate the required red point file using normal procedures.

## Part B - Using Compscore3

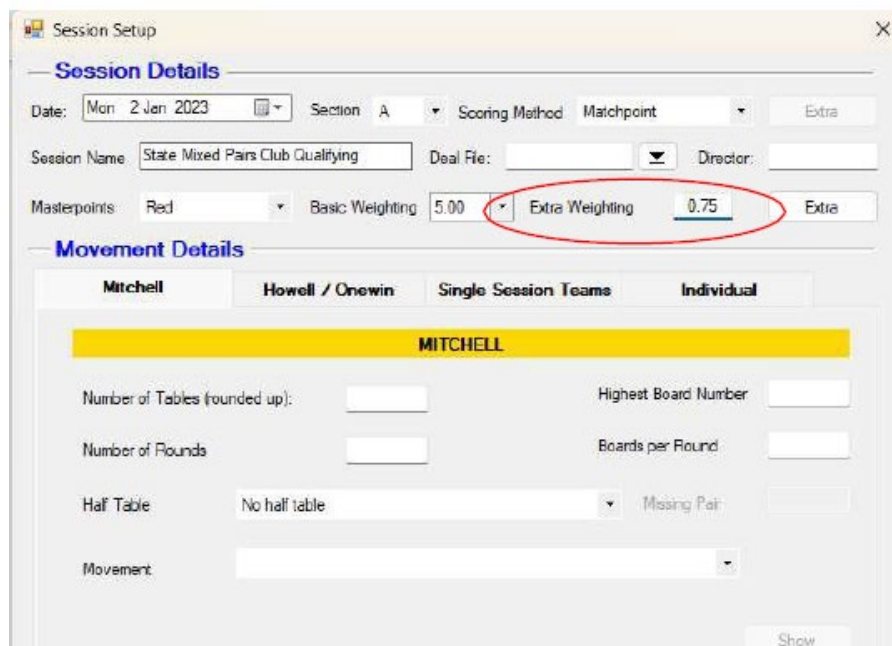
1. Set up individual sessions as normal, but choose "Red" for Masterpoints and "5.00" for Basic Weighting (see Figure 3).



The screenshot shows the 'Session Setup' window. In the 'Session Details' section, 'Date' is 'Mon 2 Jan 2023', 'Section' is 'A', 'Scoring Method' is 'Matchpoint', and 'Session Name' is 'State Open Pairs Club Qualifying'. The 'Masterpoints' dropdown is set to 'Red' and the 'Basic Weighting' dropdown is set to '5.00'. In the 'Movement Details' section, 'Mitchell' is selected, and 'Howell / Onewin' is chosen as the movement type. The 'Number of Tables (rounded up)' is set to 4.00, and the 'Number of Rounds' is set to 5.00.

Figure 3: Session Setup using Compscore 3

2. In the Additional Weighting Factor box, type "0.75" to reflect the fact that this event is restricted by gender (Figure 4).



The screenshot shows the 'Session Setup' window. In the 'Session Details' section, 'Date' is 'Mon 2 Jan 2023', 'Section' is 'A', 'Scoring Method' is 'Matchpoint', and 'Session Name' is 'State Mixed Pairs Club Qualifying'. The 'Masterpoints' dropdown is set to 'Red', the 'Basic Weighting' dropdown is set to '5.00', and the 'Extra Weighting' box is set to '0.75'. In the 'Movement Details' section, 'Mitchell' is selected, and 'Single Session Teams' is chosen as the movement type. The 'Number of Tables (rounded up)' is set to 4.00, and the 'Number of Rounds' is set to 5.00.

Figure 4: Additional weighting for a Mixed event

3. Type in the Movement Details and score normally. The masterpoints will be calculated correctly. Generate the required red point file using normal procedures.

## Part C - Using Scorebridge

1. Enter the results and score up normally until the Results and Outputs window is reached (see Figure 5). Choose "Options" and "Master Point Options FOR THIS EVENT".

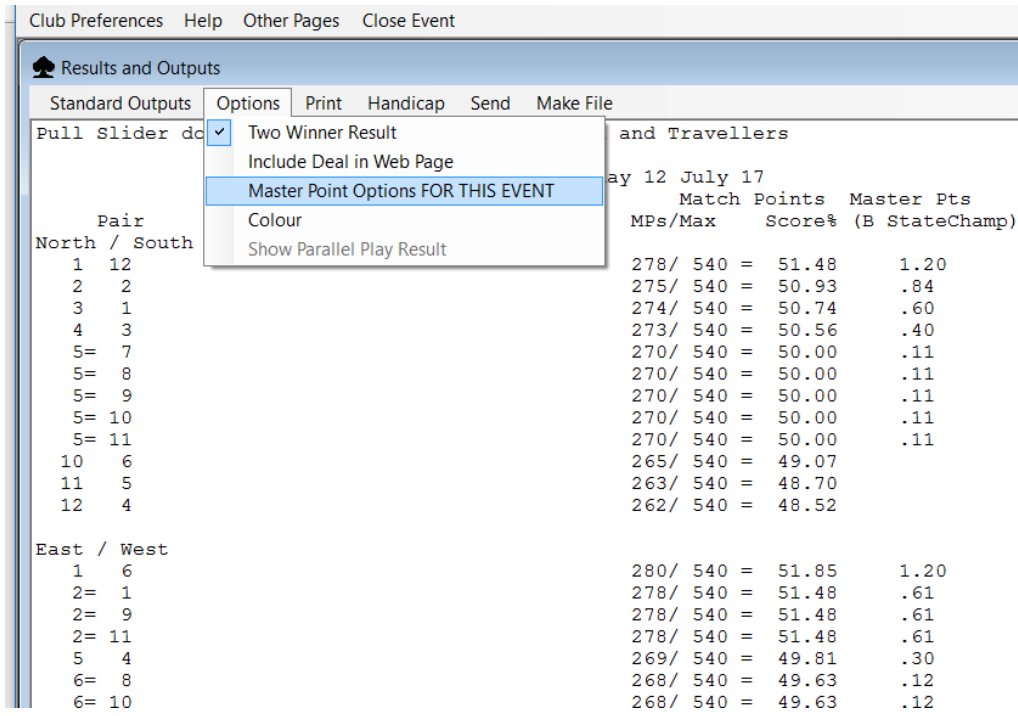


Figure 5: Session Setup for Scorebridge

2. Choose "B StateChamp" from the drop down menu (see Figure 6). Click "OK".

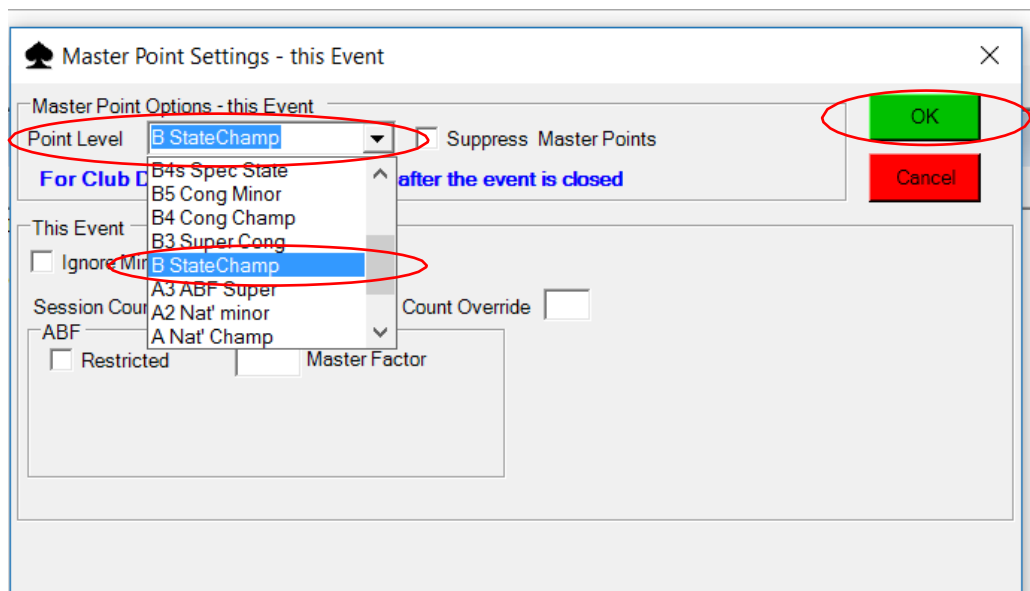


Figure 6: Scorebridge Masterpoint Settings

3. In the Master Factor box, type "0.75" to reflect the fact that this event is restricted by gender (Figure 7). Click "OK".

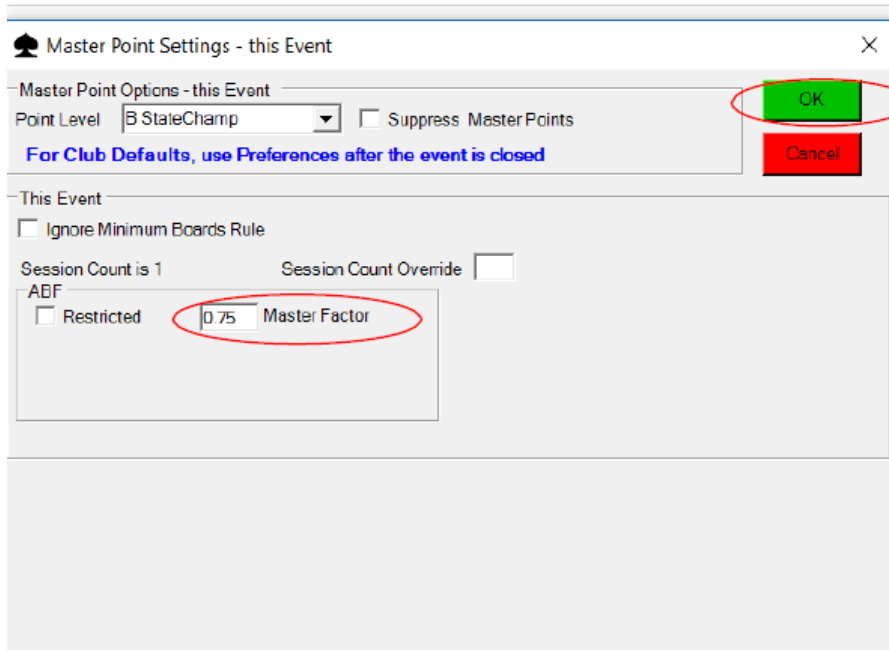


Figure 7: Master Factor

4. The masterpoints will be calculated correctly. Generate the required red point file using normal procedures.



## Part D - Using ASE9

1. Set up individual sessions as normal, but choose "B State championship" for Masterpoint grade (see Figure 8).

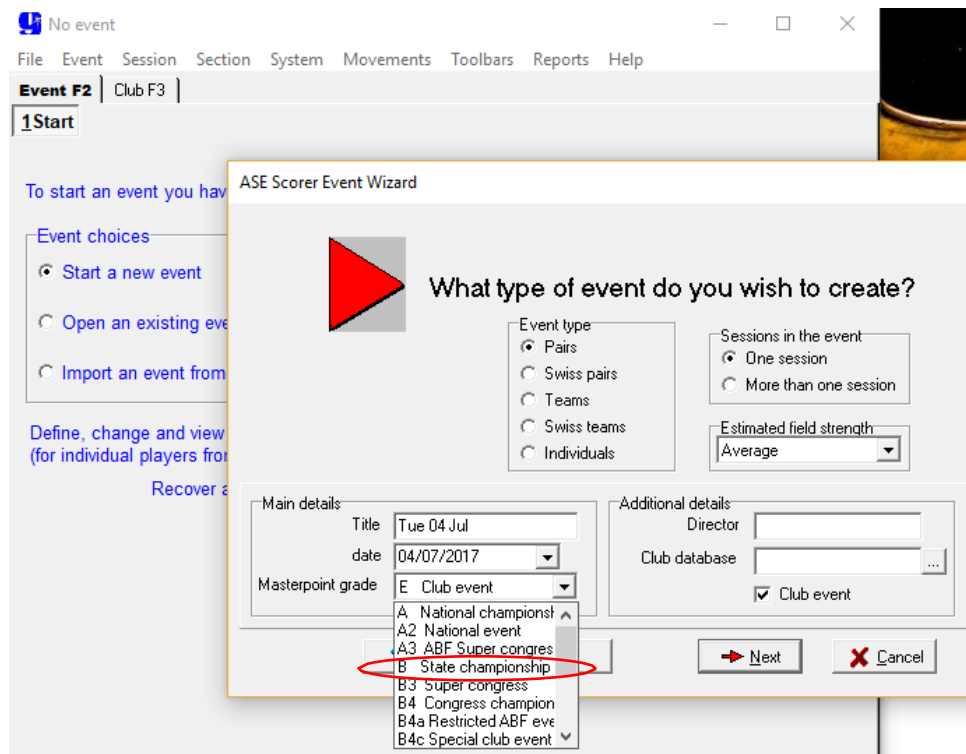


Figure 8: Setting up ASE9

2. Run the sessions normally.
3. When it's time to score up, proceed normally until the Masterpoint Awards windows is reached (Figure 9re 7). Under Master factor grade, click the down arrow and choose "Custom".

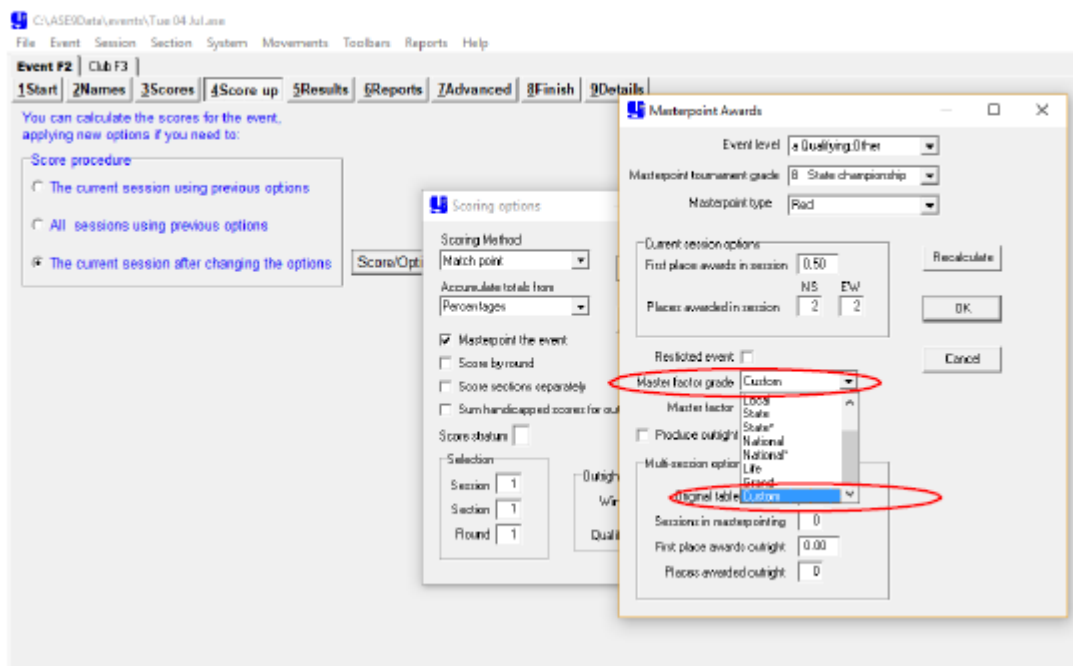


Figure 9: Master factor grade

4. Check the masterpoint tournament grade is "B State championship" (Figure 10). Then in the and the Master Factor box, remove the default "1.000" and type "0.750" to reflect the fact that this event is restricted by gender. Make sure to click "Recalculate" before "OK".

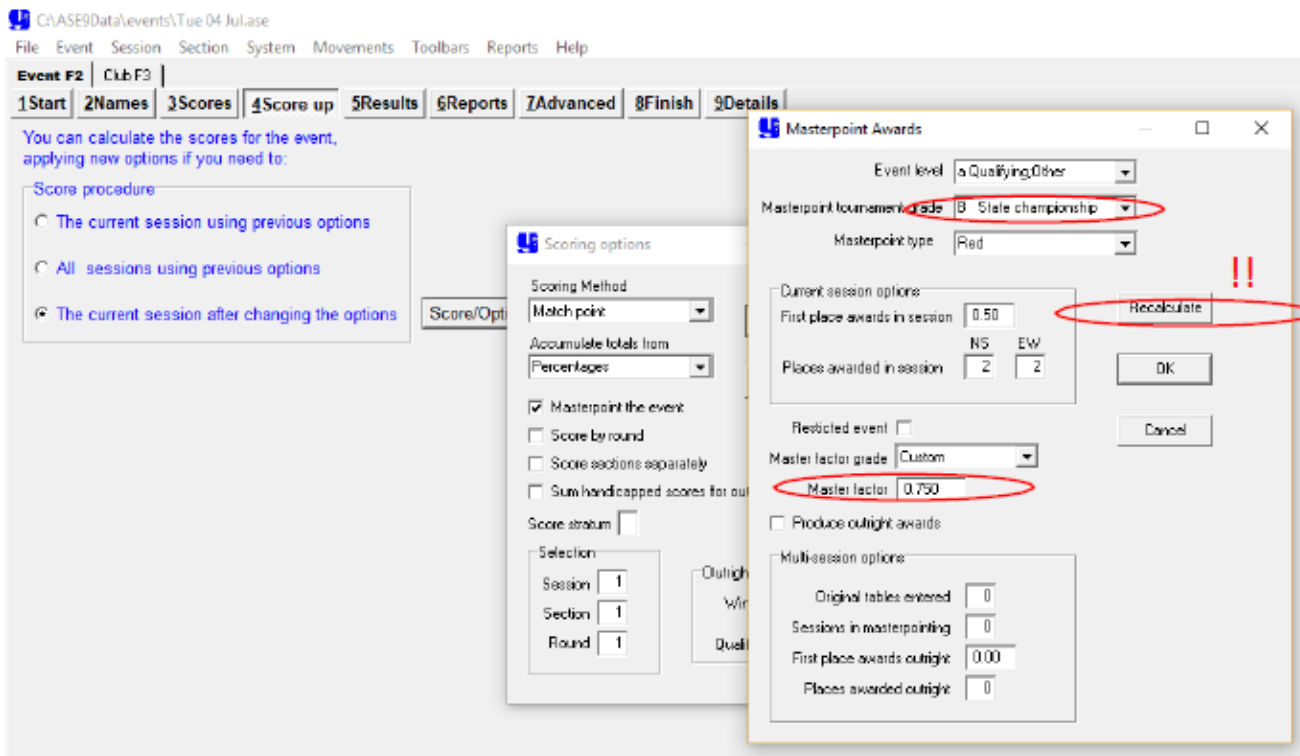


Figure 10: Masterpoint Awards in ASE

5. The masterpoints will be calculated correctly. Generate the required red point file using normal procedures.

#### Version Control

Version	Date	Changes
1.1	2 Jan 2025	Draft for consideration of the Events Committee